

PUBLIC AUCTION

SATURDAY, JUNE 9, 2018 - 10:00 AM

Neosho County Fairgrounds in Erie, KS

The Living Estate of Kathleen (Copeland) Wood - Owner

Directions: West edge of Erie, KS

FURNITURE & HOUSEHOLD

Harvest Dining Table w/ 5 Leaves
Dining Table & Chairs, Dining Room Hutch
Love Seat, Small Arm Chair, Upholstered Rocker
Leather Recliner, Cane Back Rocker, Secretary
3-Sided Drop Leaf Table, Cedar Chest
Round Seat Chair, Hope Chest, Coffee Table
Queen Bed Complete w/ Matching Chest
Trundle Day Bed, Nice Area Rugs
4 Panel Carved Wood Room Divider
Several Small End & Side Tables, Cedar Chest,
Glass Sided Quilt Chest, 4 Drawer Cabinets
Bell & Howell Fluorescent Floor Lamp
Chair/Ironing Board/ Step Stool Combo,
Mirror/Cutting Table, Sewing Table,
TV & Converter Box
Ottlite Sewing Lamp, Ammo Box Footstool,
Army Surplus Foot Locker, Office Chairs,
File Cabinets, Sewing & Quilting Supplies
Art & Artifacts from Africa
Kitchen Cookware, Dinner Sets & Flatware
Small Kitchen Appliances
Home Office Supplies, Paper Shredder
Knick-Knacks & What Nots

Bed & Bath Linens, Stanley Tools Knife Set
Lots of Misc.

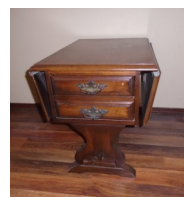
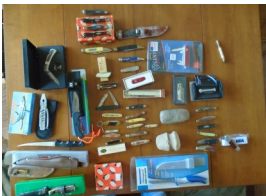
COLLECTIBLES

Pocket Knife Collection
Vintage Costume Jewelry
Hull Vases
Figurines, Oil Lamps
Tea Pots & Glassware
Bell Collection
Watches
Singer Featherlight Sewing Machine

Announcements made sale day take precedence over all other representation.

Terms: Cash or approved check. Buyer number with photo ID. Not responsible for theft or accidents.

Lunch and Refreshments available.



BUNTIN AUCTION SERVICE - ERIE, KS

"The Sound That Sells"

620-244-3791 - kbuntin@cox.net - Sale day phone: 620-778-1221

More photos available at www.buntinauctionservice.com

